

Causal Inference with Big Data

6–23 December 2021

Tutorial on classification and regression trees by example

Date: 6, 10 and 13 December 2021

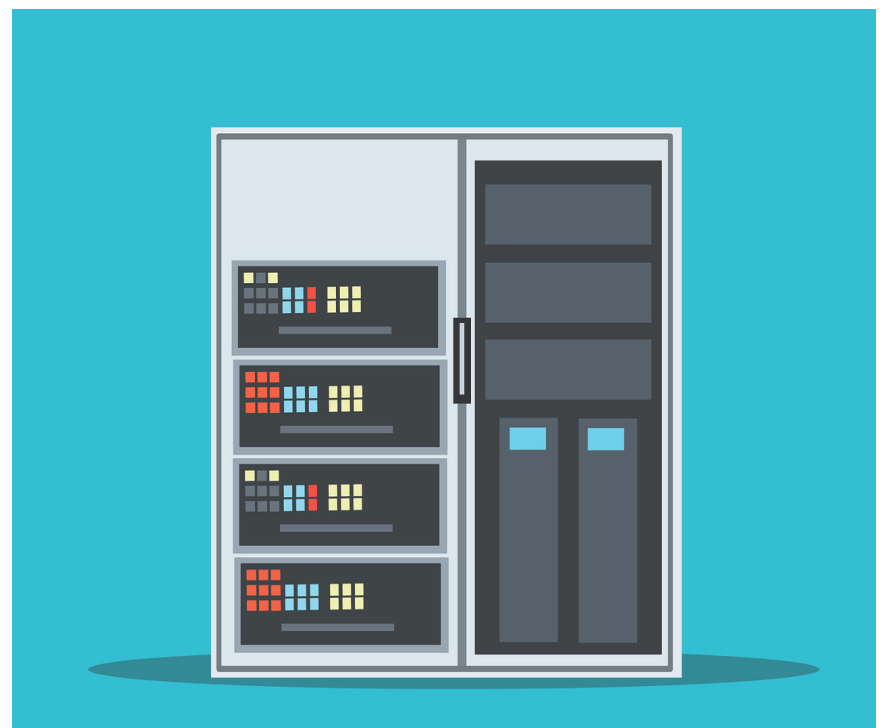
Speaker: Wei-Yin Loh (University of Wisconsin-Madison, USA)

Workshop

Date: 16–23 December 2021

Speakers

Ding-Geng Chen (Arizona State University, USA)
Peng Ding (University of California, Berkeley, USA)
Yen-Tsung Huang (Academia Sinica, Taiwan)
Zhichao Jiang (UMass Amherst, USA)
Hyunseung Kang (University of Wisconsin–Madison, USA)
Edward Kennedy (Carnegie Mellon University, USA)
Jialiang Li (National University of Singapore, Singapore)
Wei-Yin Loh (University of Wisconsin–Madison, USA)
Alex Luedkte (University of Washington, USA)
Caleb Miles (Columbia University, USA)
Elizabeth Ogburn (Johns Hopkins University, USA)
James Robins (Harvard University, USA)
Baoluo Sun (National University of Singapore, Singapore)
Zhiqiang Tan (Rutgers University, USA)
Eric Tchetgen Tchetgen (University of Pennsylvania, USA)
Stijin Vansteelandt (Ghent University, Belgium)
Miao Wang (Peking University, China)
Menggang Yu (University of Wisconsin–Madison, USA)



Online event

Registration required

<https://tinyurl.com/ImsCausalReg>



Organizing committee

Hyunseung Kang (University of Wisconsin-Madison), Co-chair
Wei-Yin Loh (University of Wisconsin-Madison), Co-chair
Jialiang Li (National University of Singapore)
Baoluo Sun (National University of Singapore)

Contact information

Institute for Mathematical Sciences
National University of Singapore
3 Prince George's Park Singapore 118402
ims.nus.edu.sg

Program webpage

<https://tinyurl.com/BigDataDec2021>